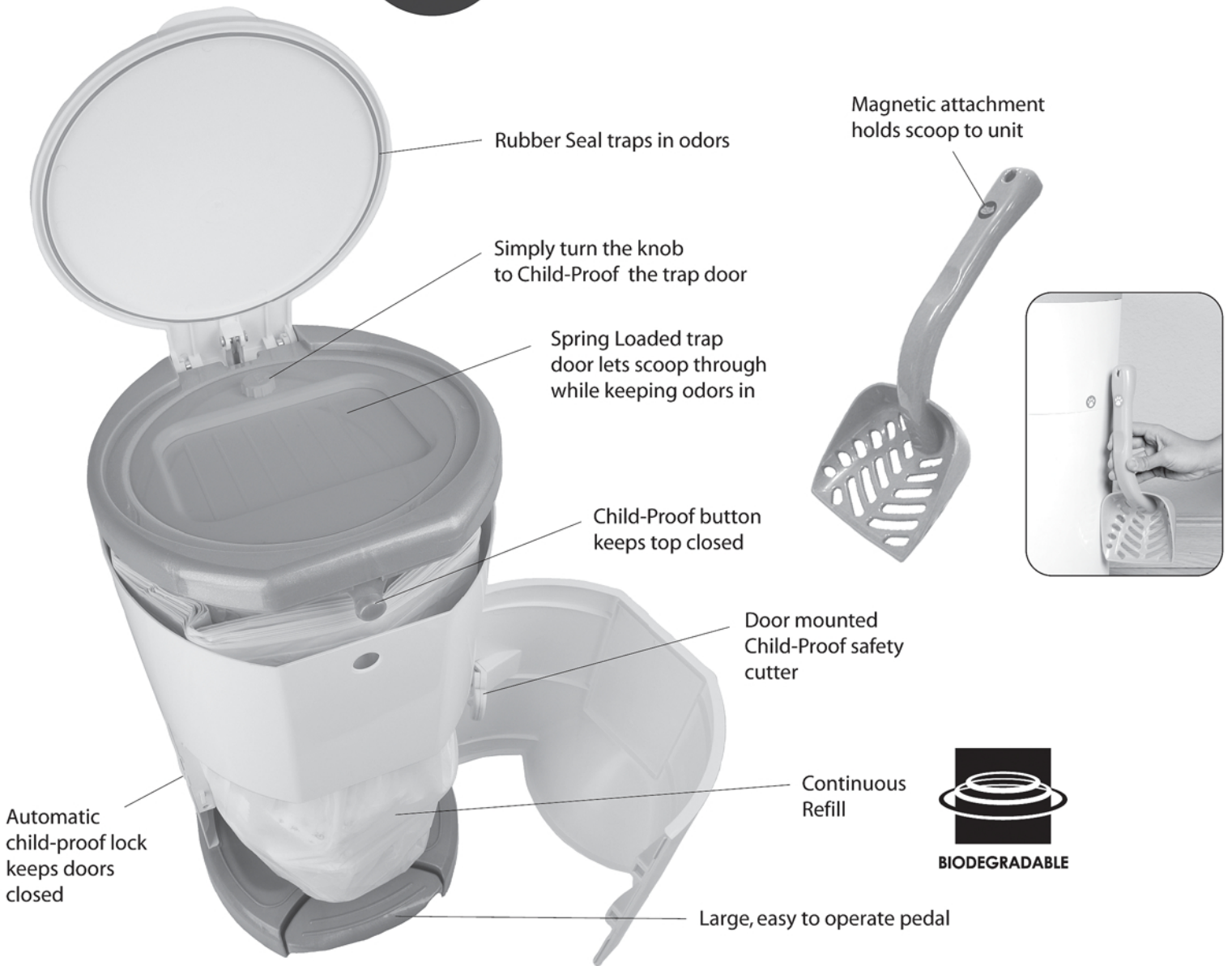
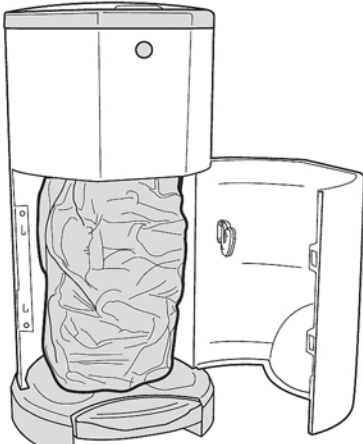
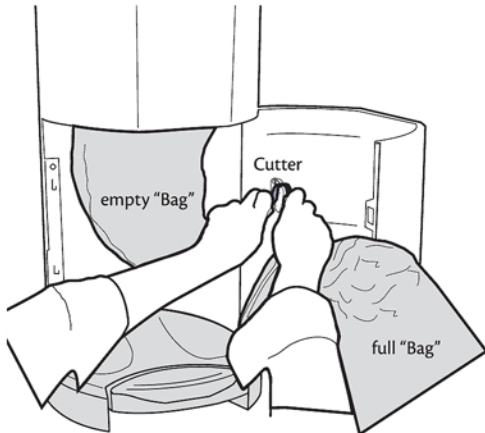
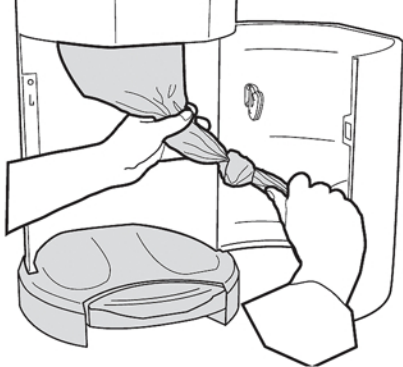


Your Litter Champ is ready for use right out of the box. Just Scoop, Step and Drop.



Follow the steps below to empty your Litter Champ:

- 1** When the pail is full, open the door and pull the full "Bag" downwards.
 
- 2** Cut full "Bag" on the door-mounted Cutter. Tie the full "Bag" and dispose.
 
- 3** Tie a knot at the bottom of the refill, creating a new "Bag" and close the door.
 

WARNING!
 TO AVOID DANGER OF SUFFOCATION, KEEP THE REFILL LINER AWAY FROM BABIES AND CHILDREN. DO NOT USE THE REFILL IN CRIBS, BEDS, CARRIAGES, STROLLERS, OR PLAYPENS.

Care of your Litter Champ:
 Your unit is basically maintenance free, however, if necessary, the surfaces can be cleaned with a non-abrasive cleaner. Safe for Bleach.
 For further assistance or store locations please visit luckychamp.com, or call our Customer Care Department at 1-800-856-0332.

